



Klimaatverandering
een hot item
voor de Meinweg

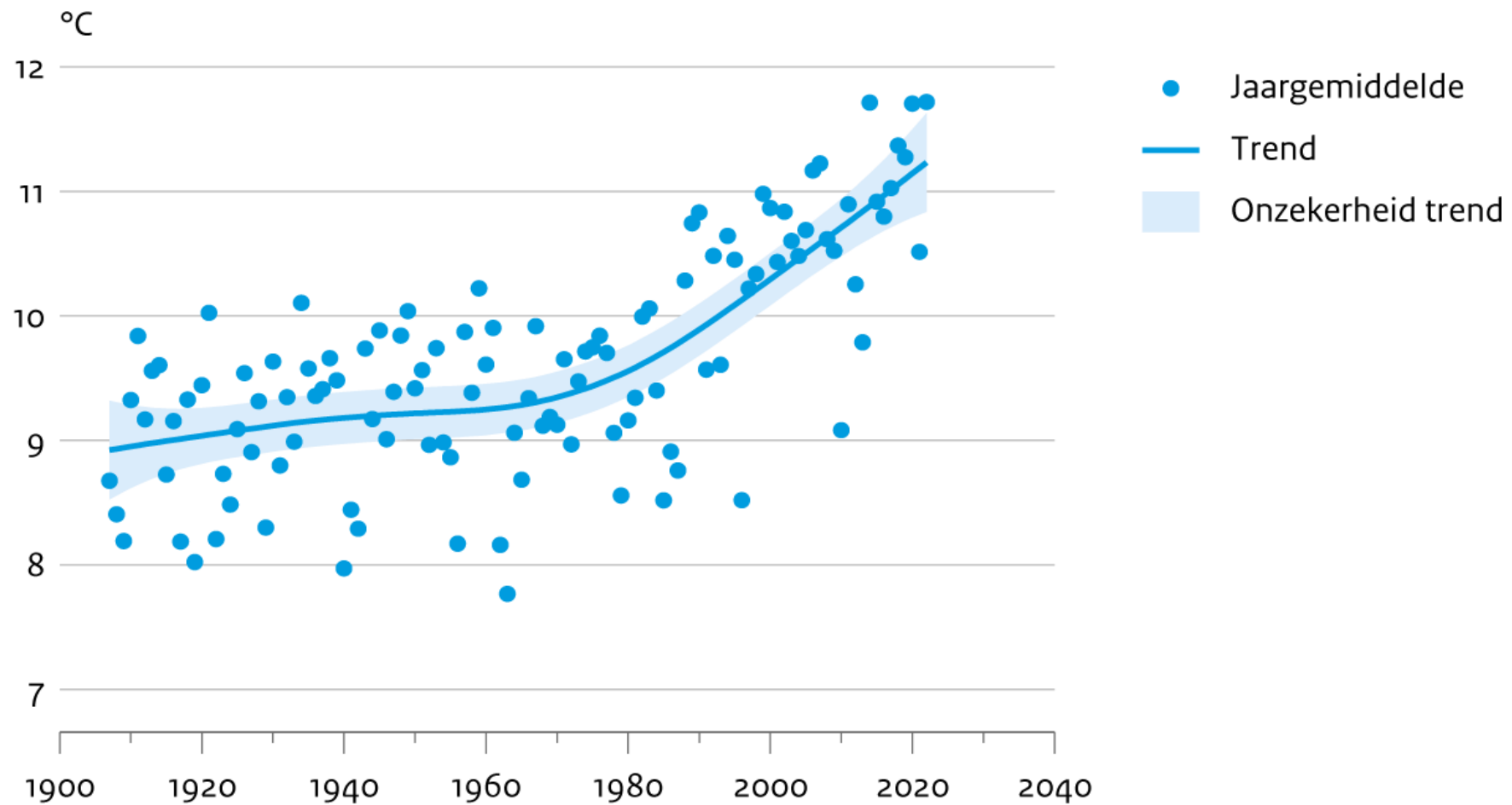
Klimawandel ist ein
heißes Thema



Gemiddeld is de temperatuur in Nederland sinds 1901 gestegen met 2,3°C.

- Die Durchschnittstemperatur in den Niederlanden ist seit 1901 um 2,3°C gestiegen

Jaartemperatuur op vijf KNMI-hoofdstations



Bron: KNMI

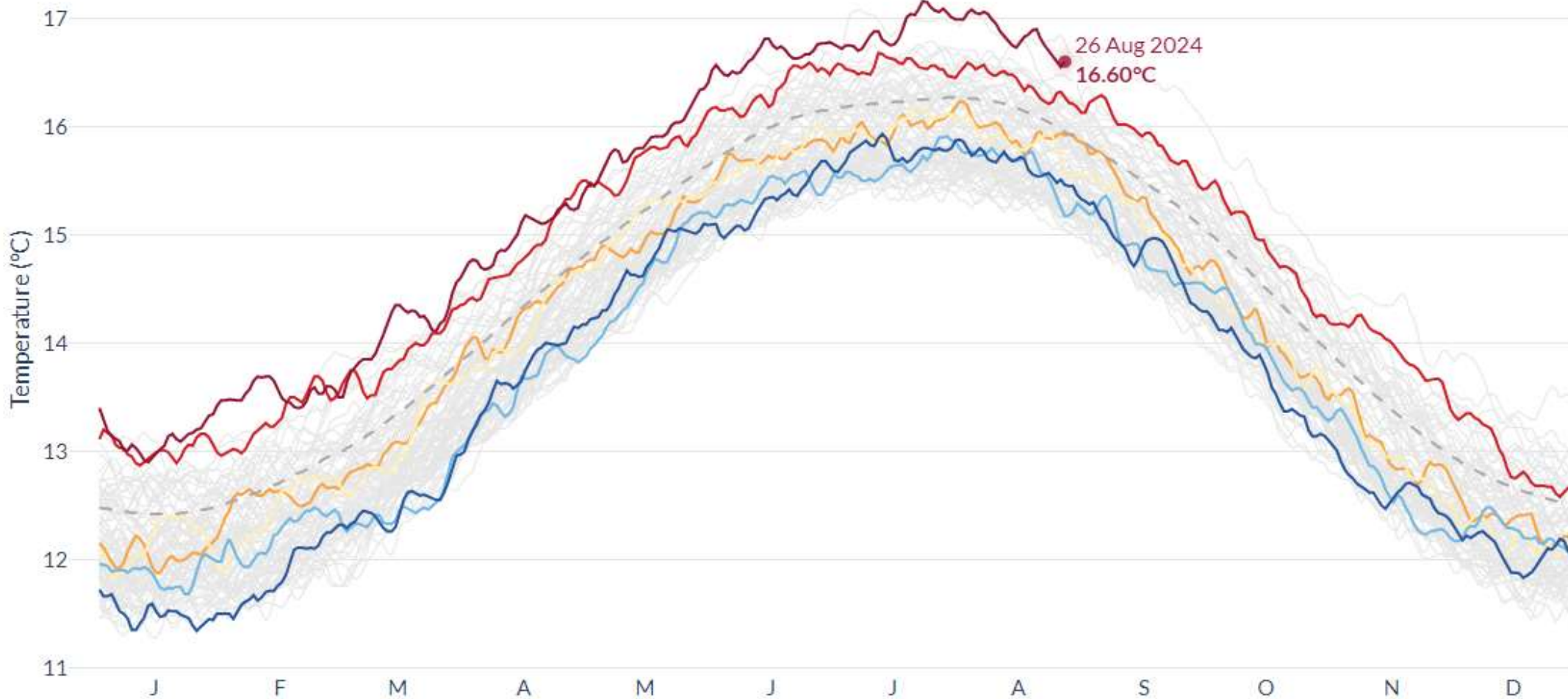
PBL/aug23
www.clo.nl/nlo22615

Global surface air temperature

Daily average • Data ERA5

Credit: C3S/ECMWF

-- 1991-2020 average 2024 1940 1960 1980 2000 2020 1940-2023



+ Add years to compare with 2024

↺ ⬇️ 📷 ⓘ

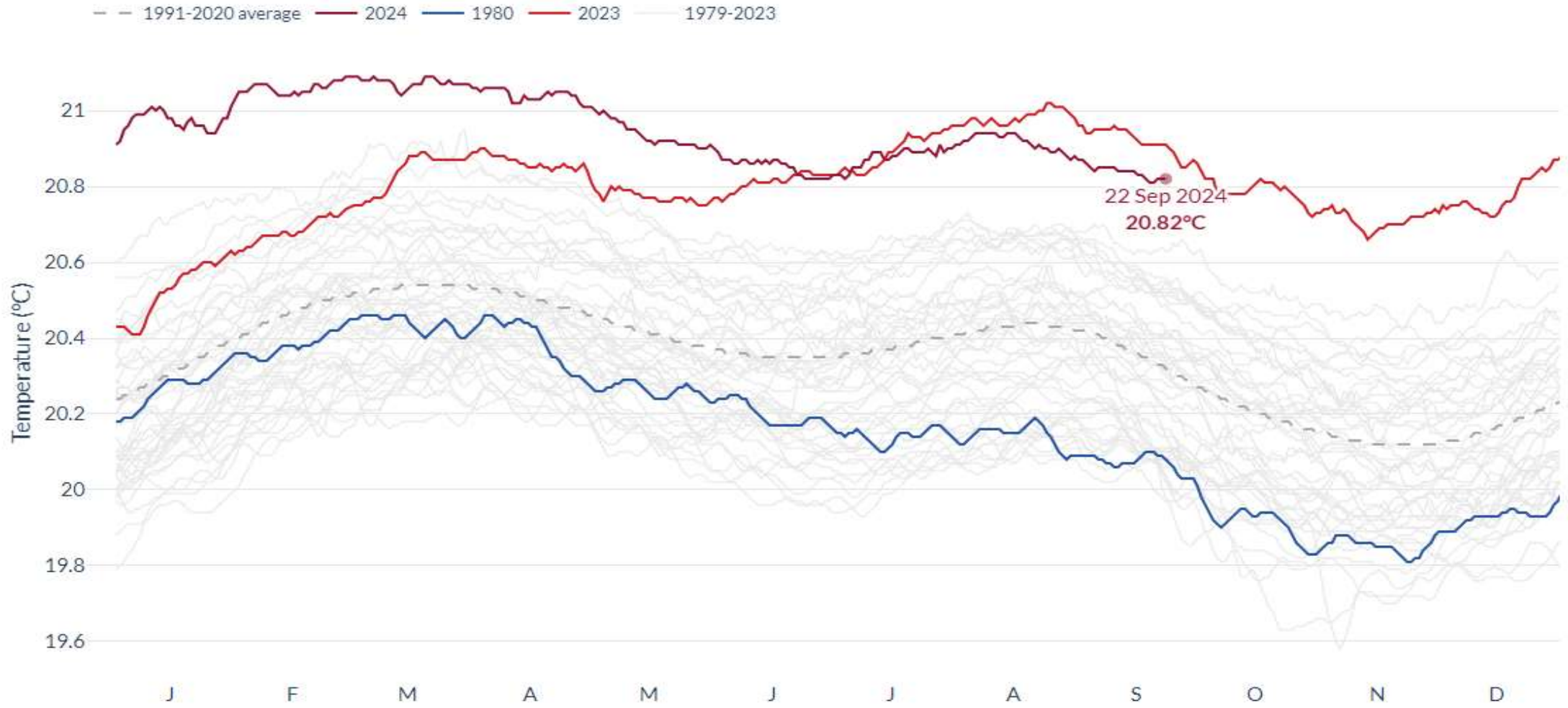
Absolute values

Anomalies

Sea surface temperature • 60°S - 60°N

Daily average • Data ERA5

Credit: C3S/ECMWF



+ Add years to compare with 2024

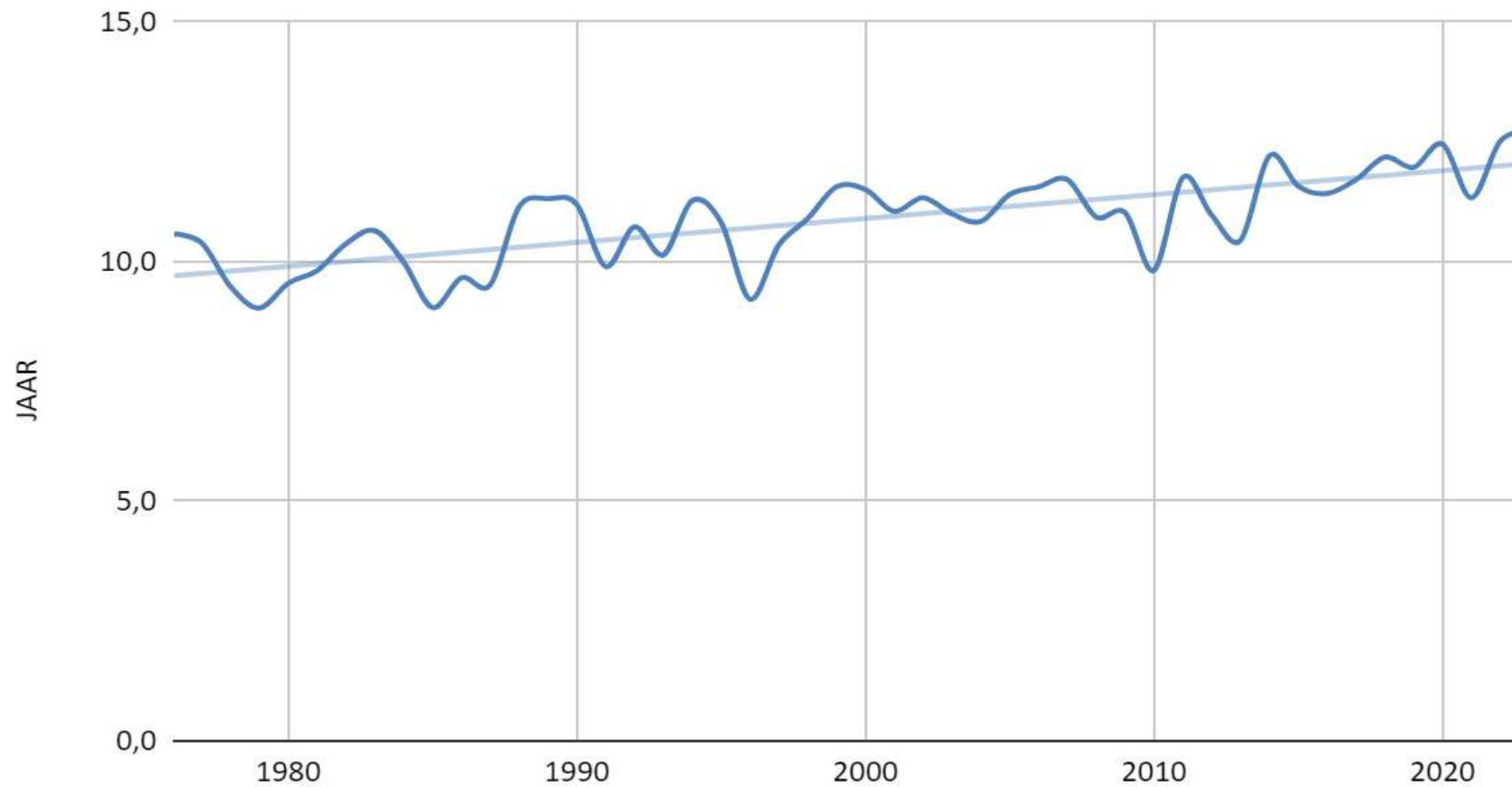


Gemiddelde temperatuur Vlodrop-Station en Montfort



Mittelwert

Gemiddelde jaartemperatuur Montfort 1976-2023

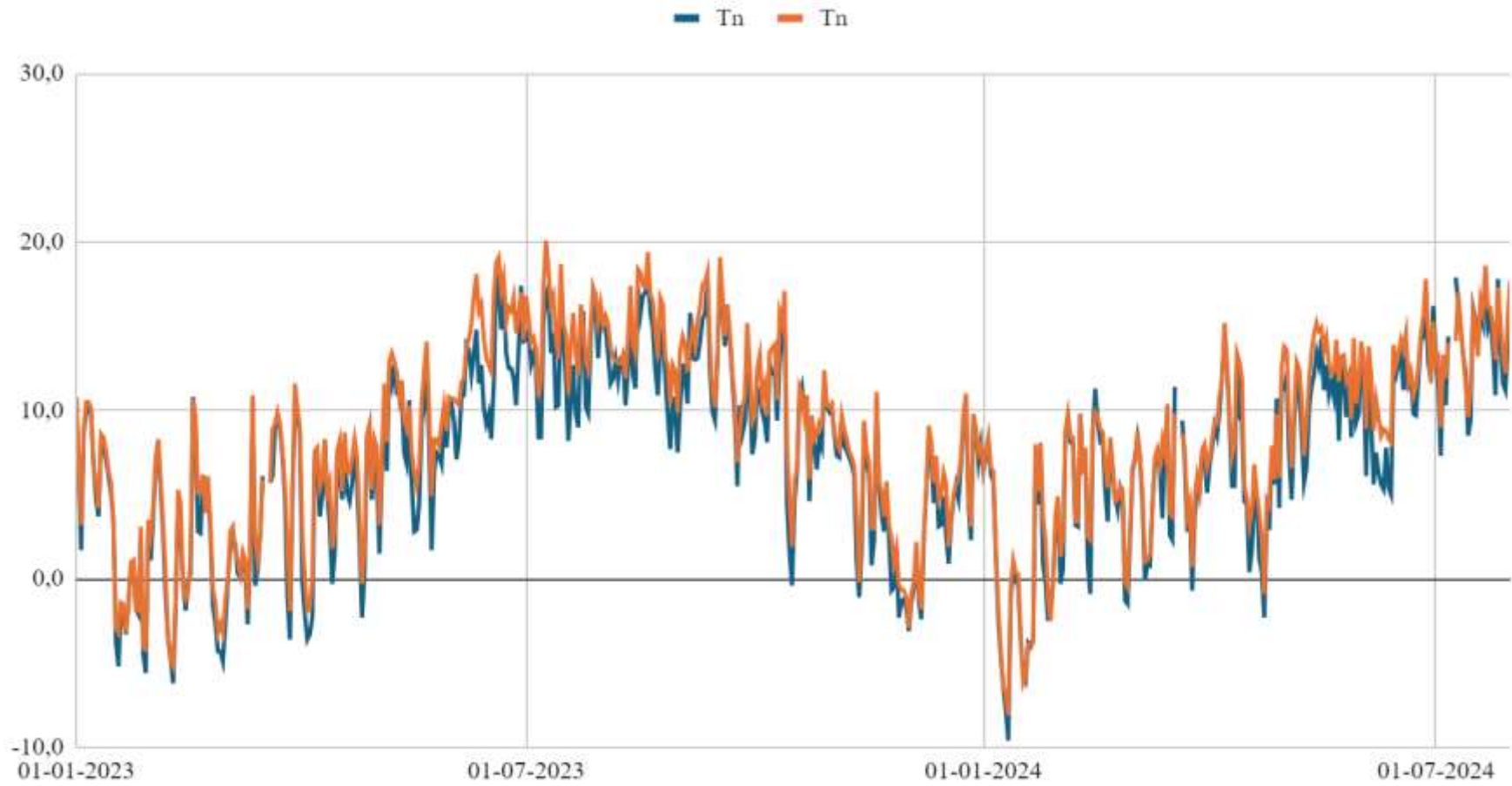


Klimamittelwert

1976 - 2005 10,5°C

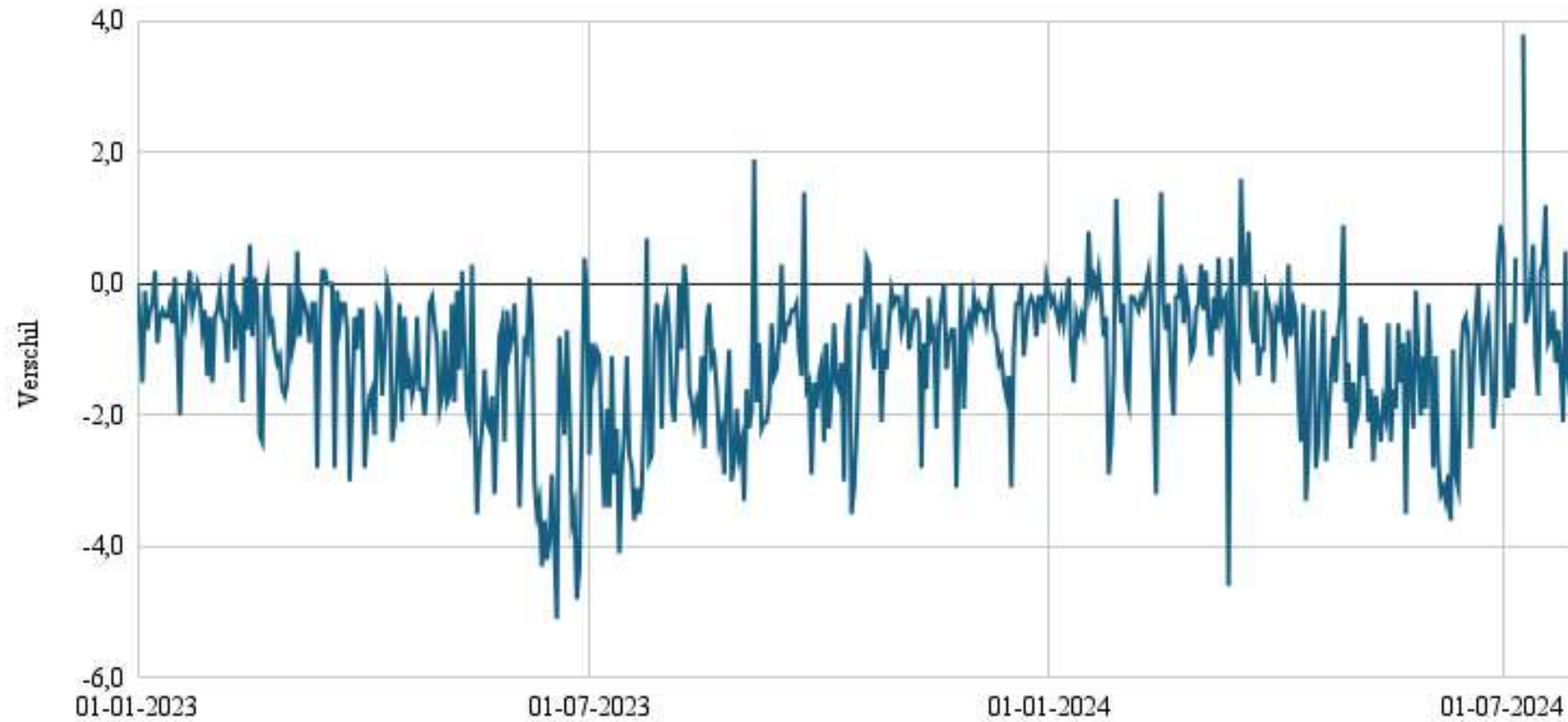
1994 - 2023 11,3°C

Vlodrop Station/Tn en Montfort/Tn



Minimum Temperatur

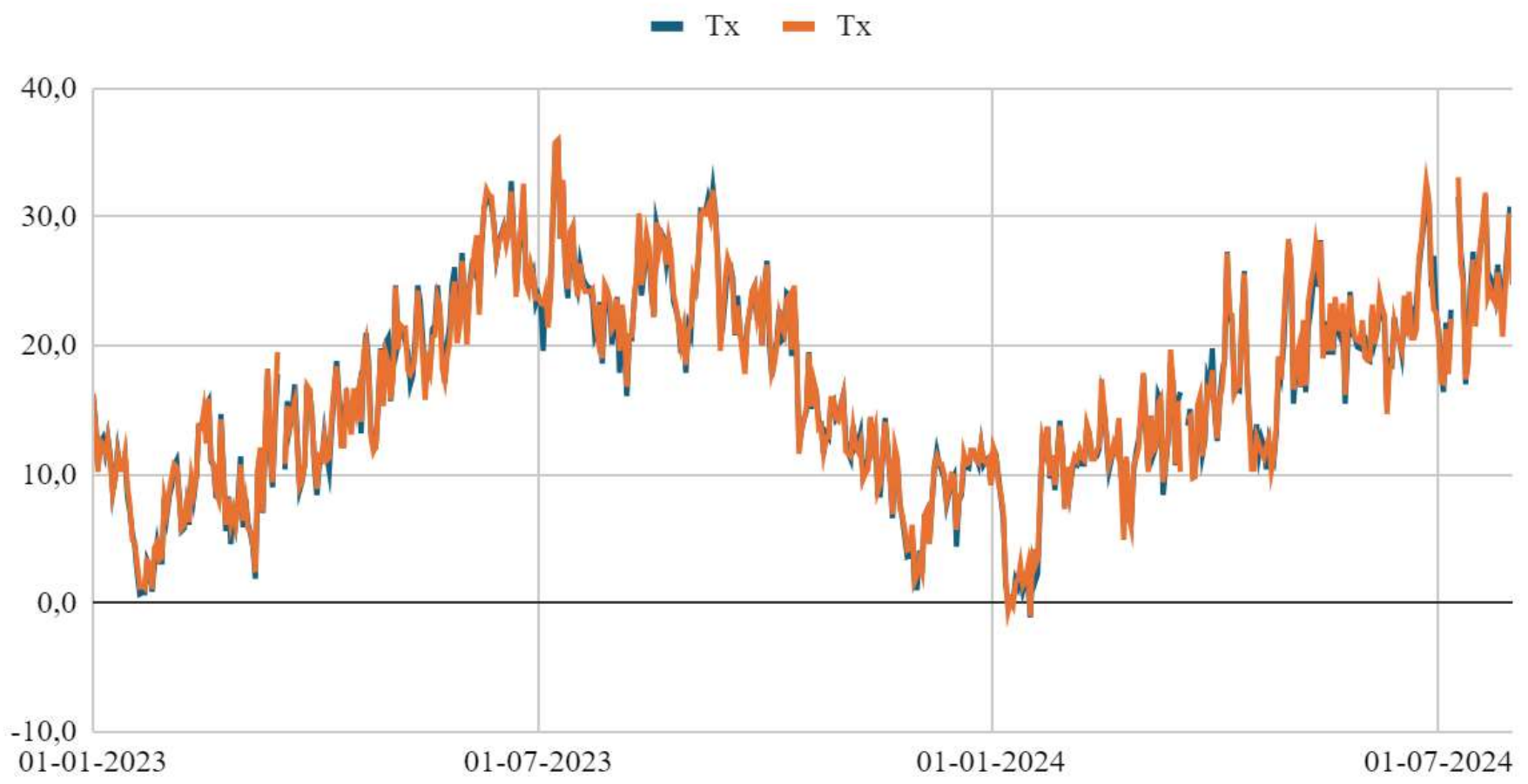
Verschil Tn Vlodrop-Station Montfort



Differentz

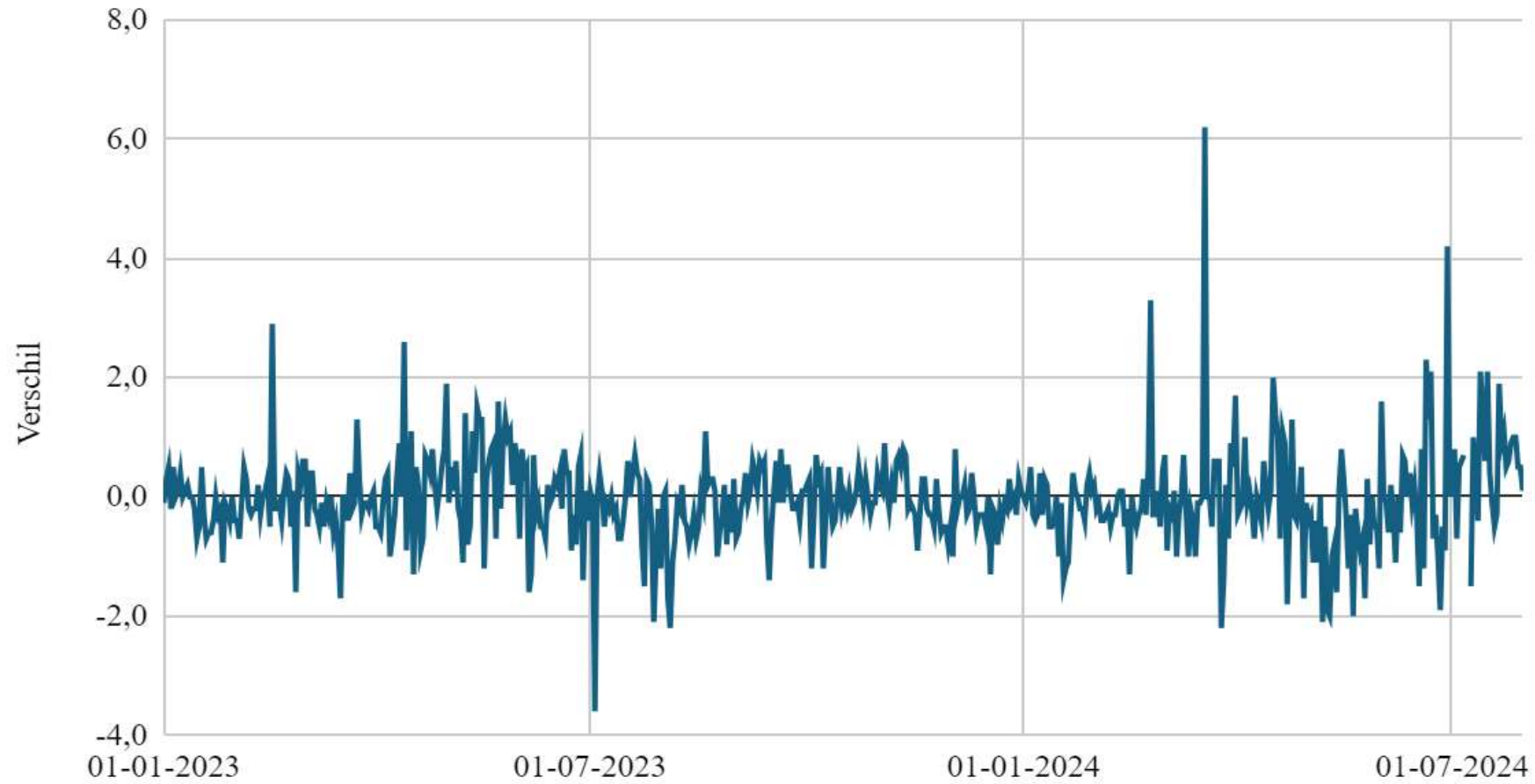
Verschil minimum
temperatuur

Vlodrop Station/Tx en Montfort/Tx



Maximum Temperatuur

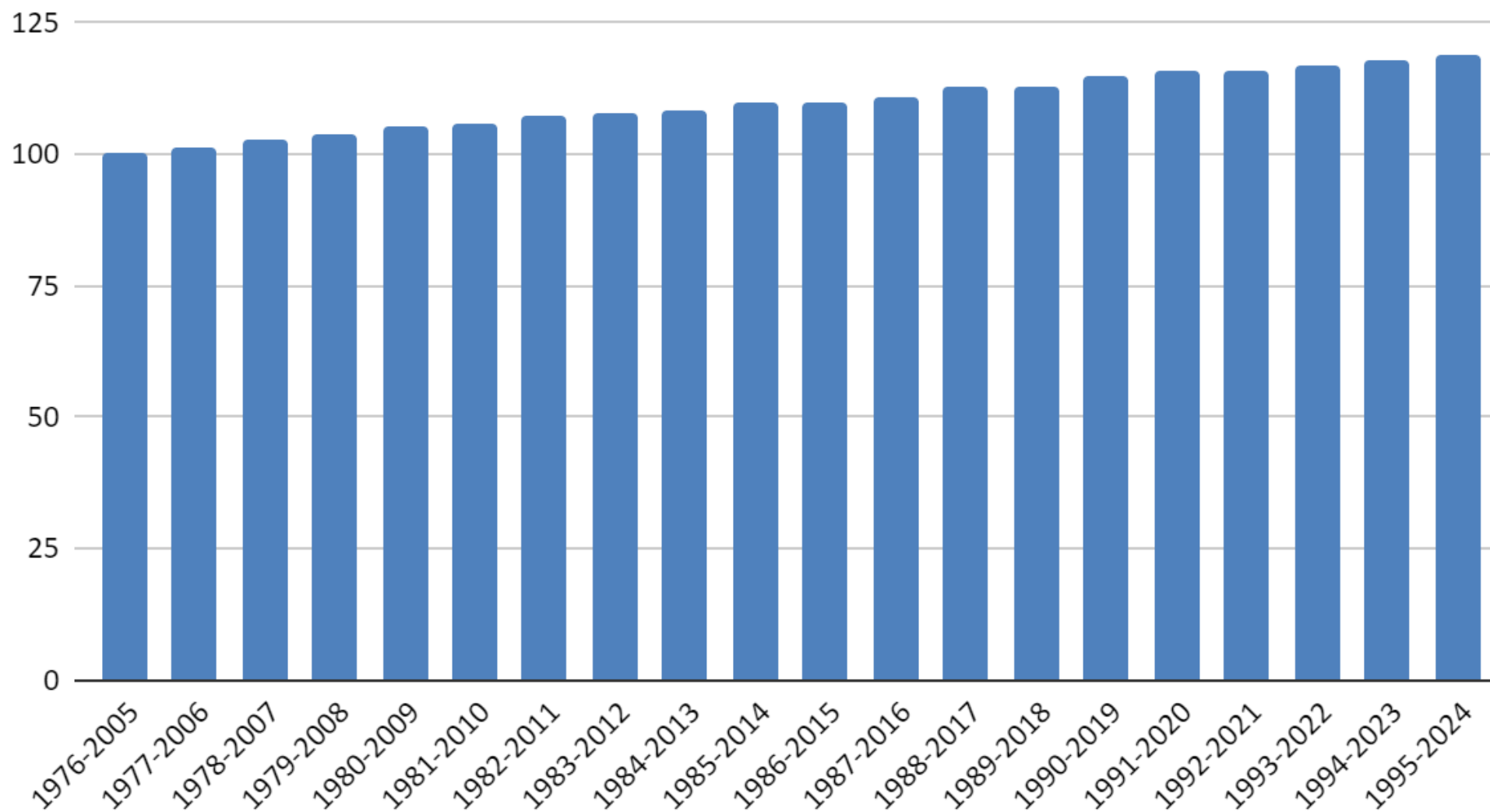
Vershil Vlodrop Station en Montfort



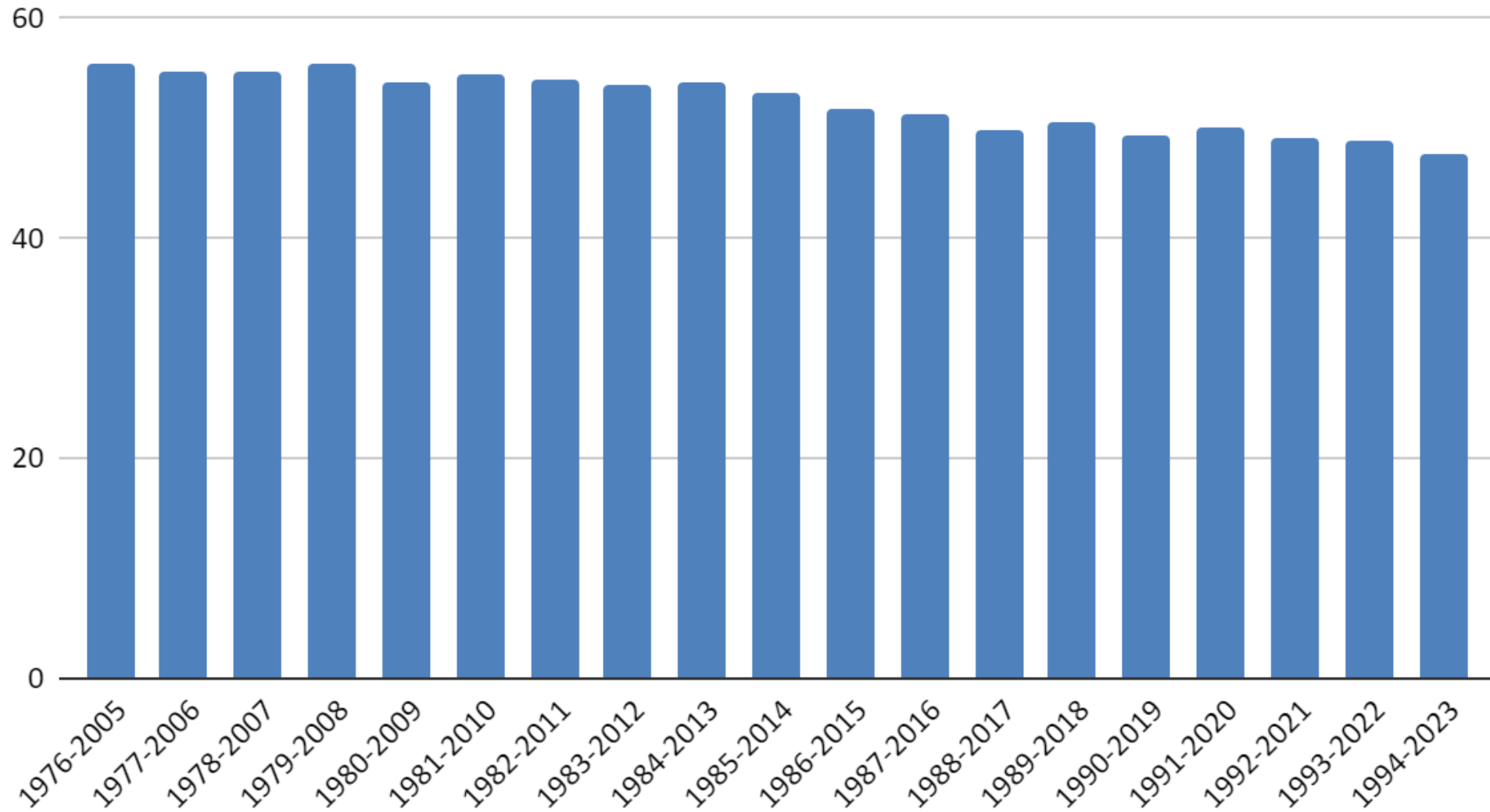
Diferenz

Vershil
maximum
temperatuur

Warme dagen



Vorstdagen Montfort

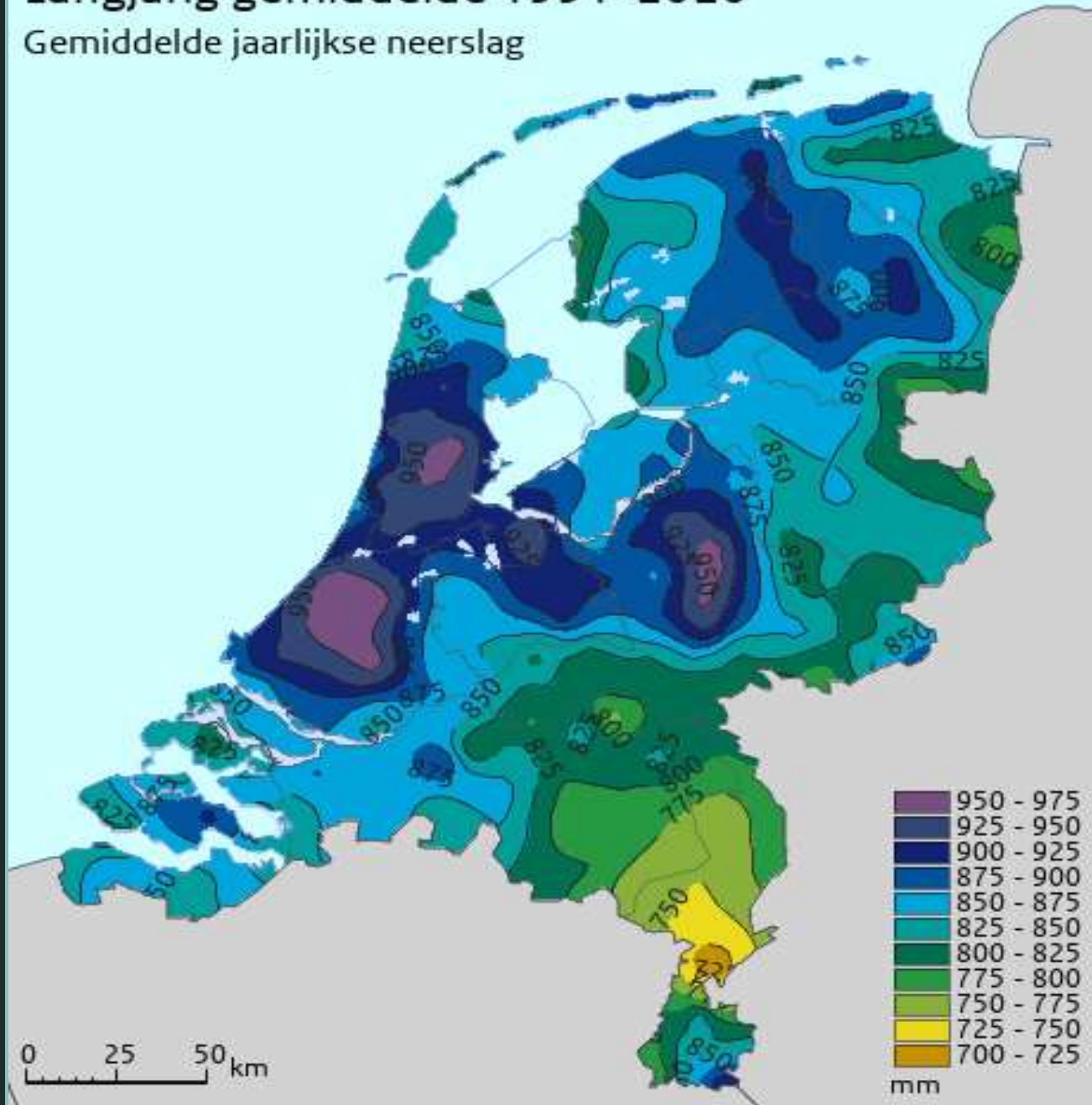




- Conclusies
Schlußfolgerungen

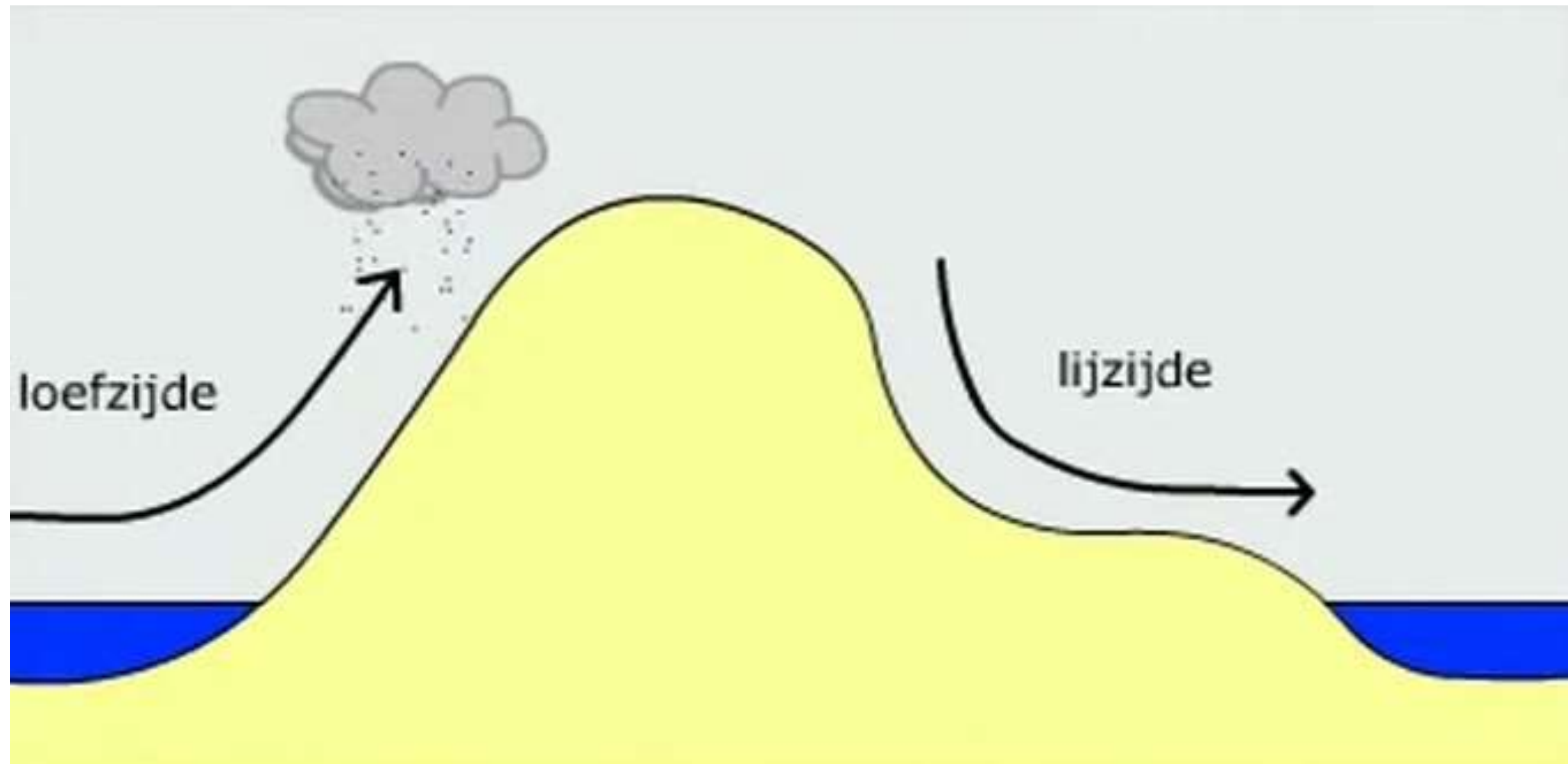
Langjarig gemiddelde 1991-2020

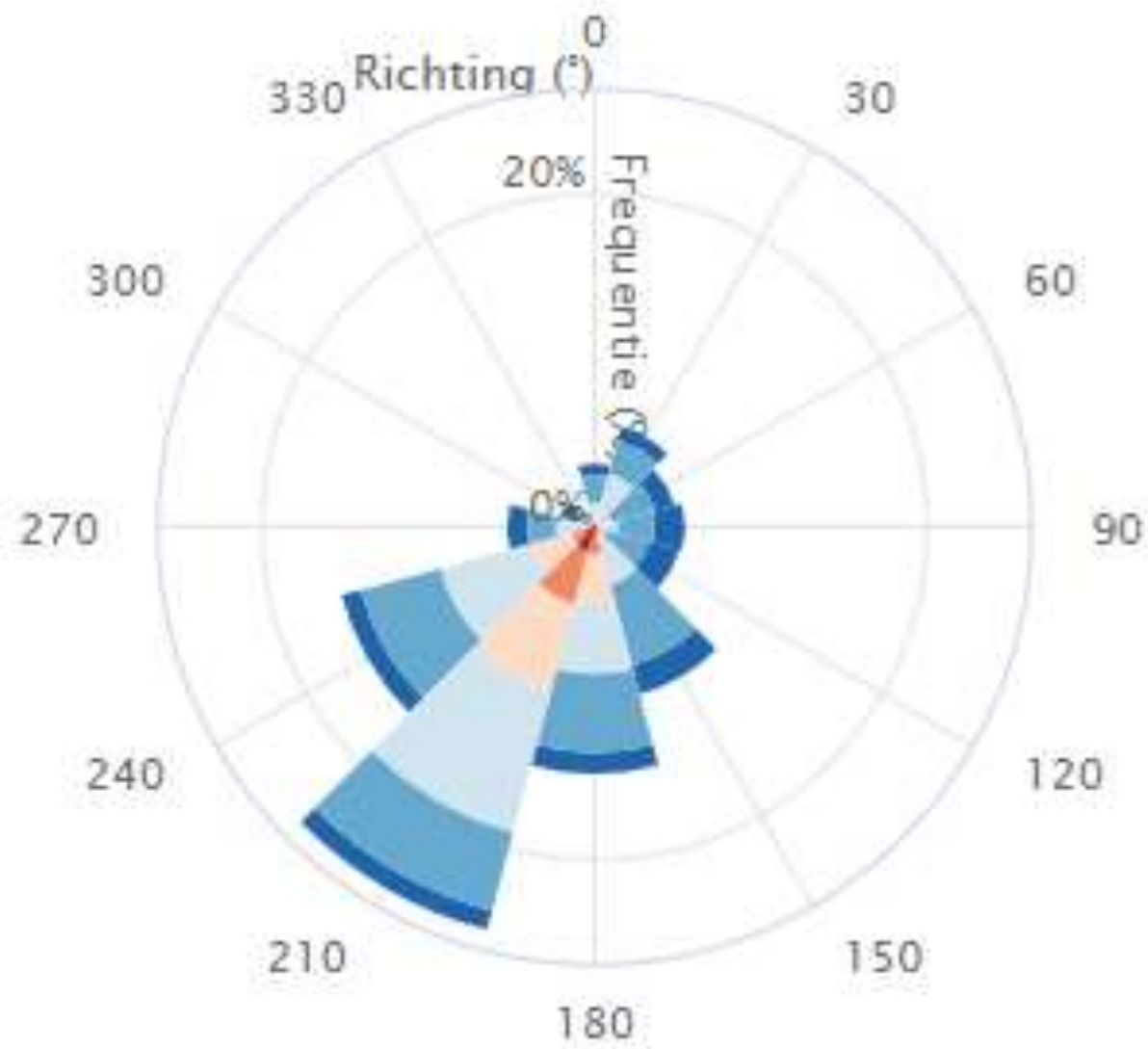
Gemiddelde jaarlijkse neerslag



Neerslag

Niederschlag





Windsnelheid (m/s)

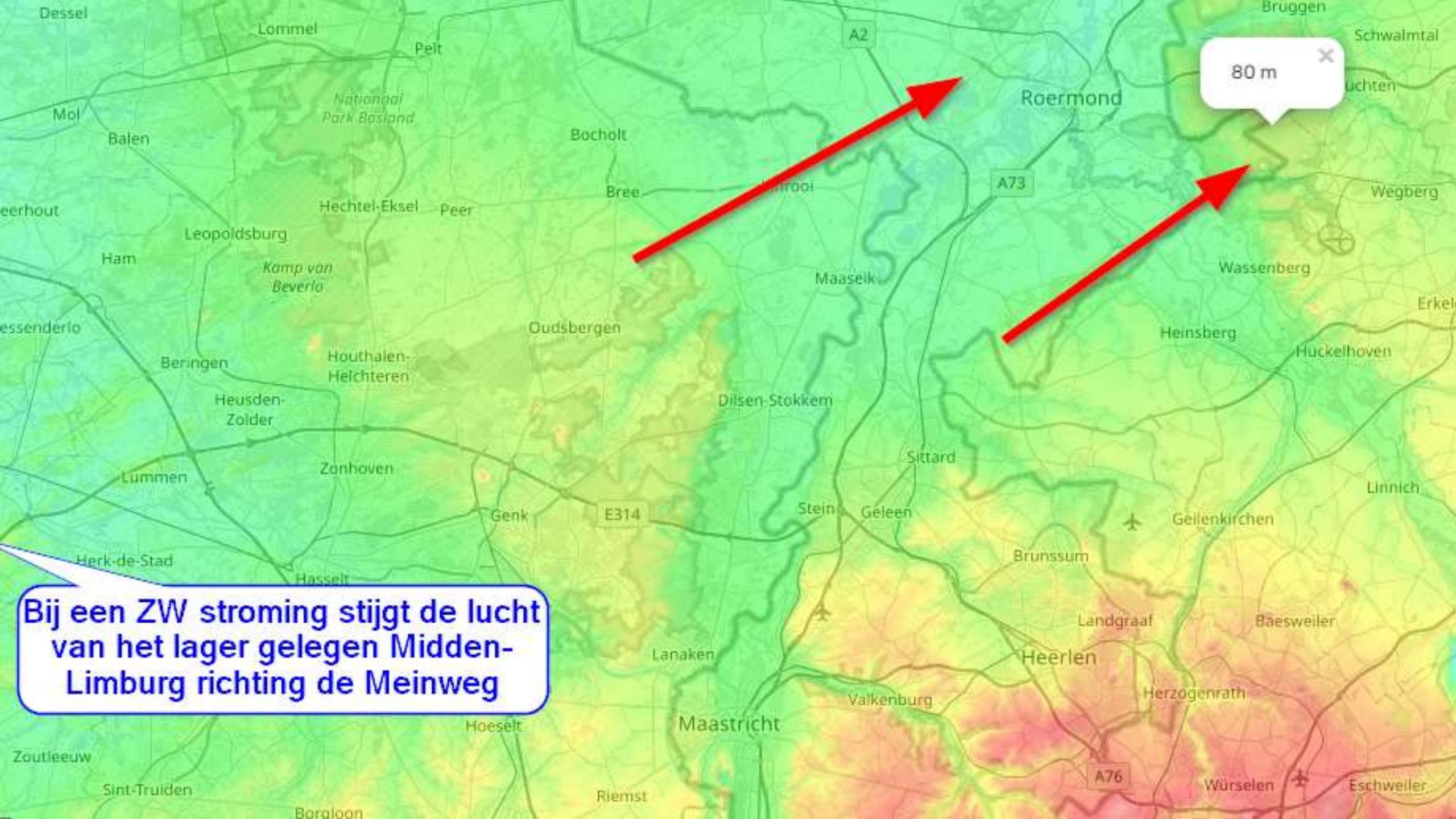
- >10
- 8-10
- 6-8
- 4-6
- 2-4
- 0-2





90 m X

Bij een ZW stroming daalt de lucht na passage van het Kempisch plateau richting Midden-Limburg



80 m ✕

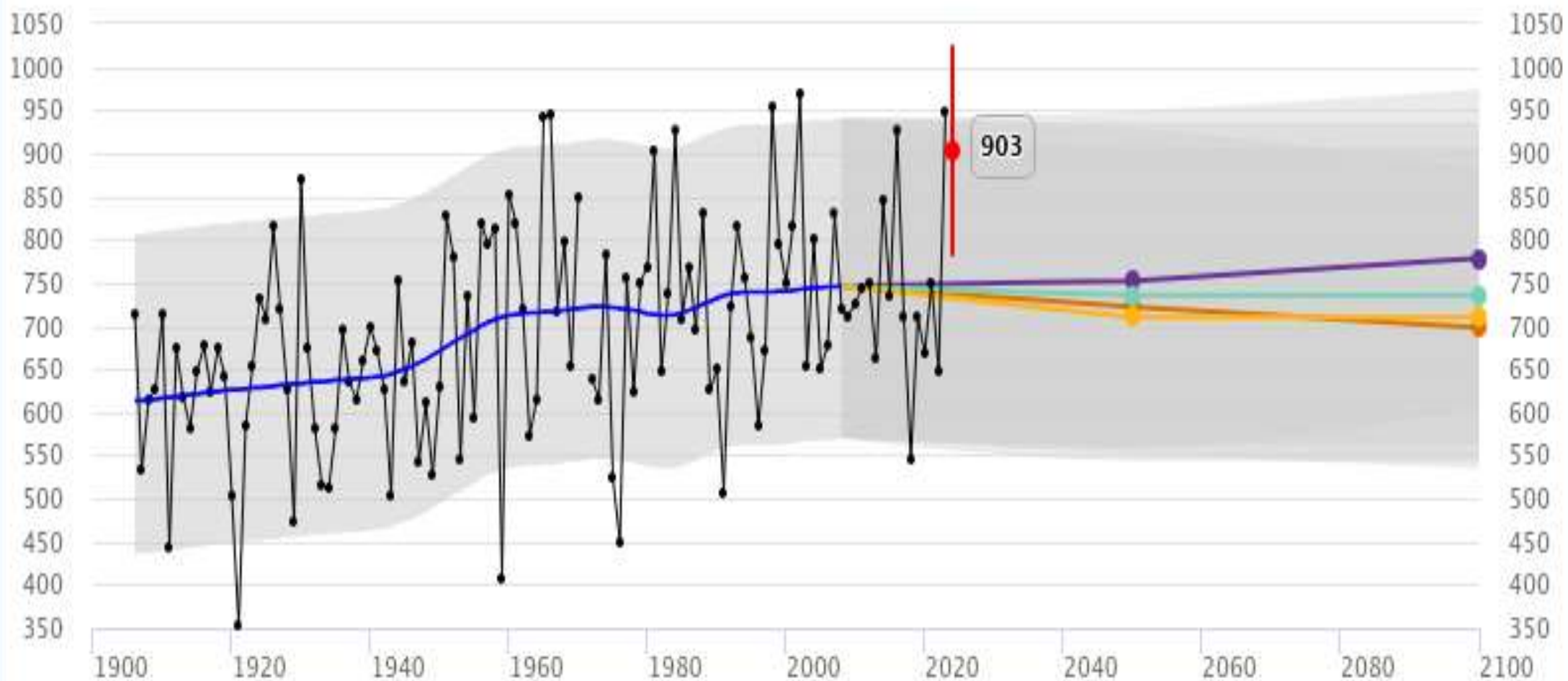
Bij een ZW stroming stijgt de lucht van het lager gelegen Midden-Limburg richting de Meinweg



Regenmesser nach Prof.Hellmann

Jaarneerslag (mm)

Roermond, woensdag 28 augustus 2024



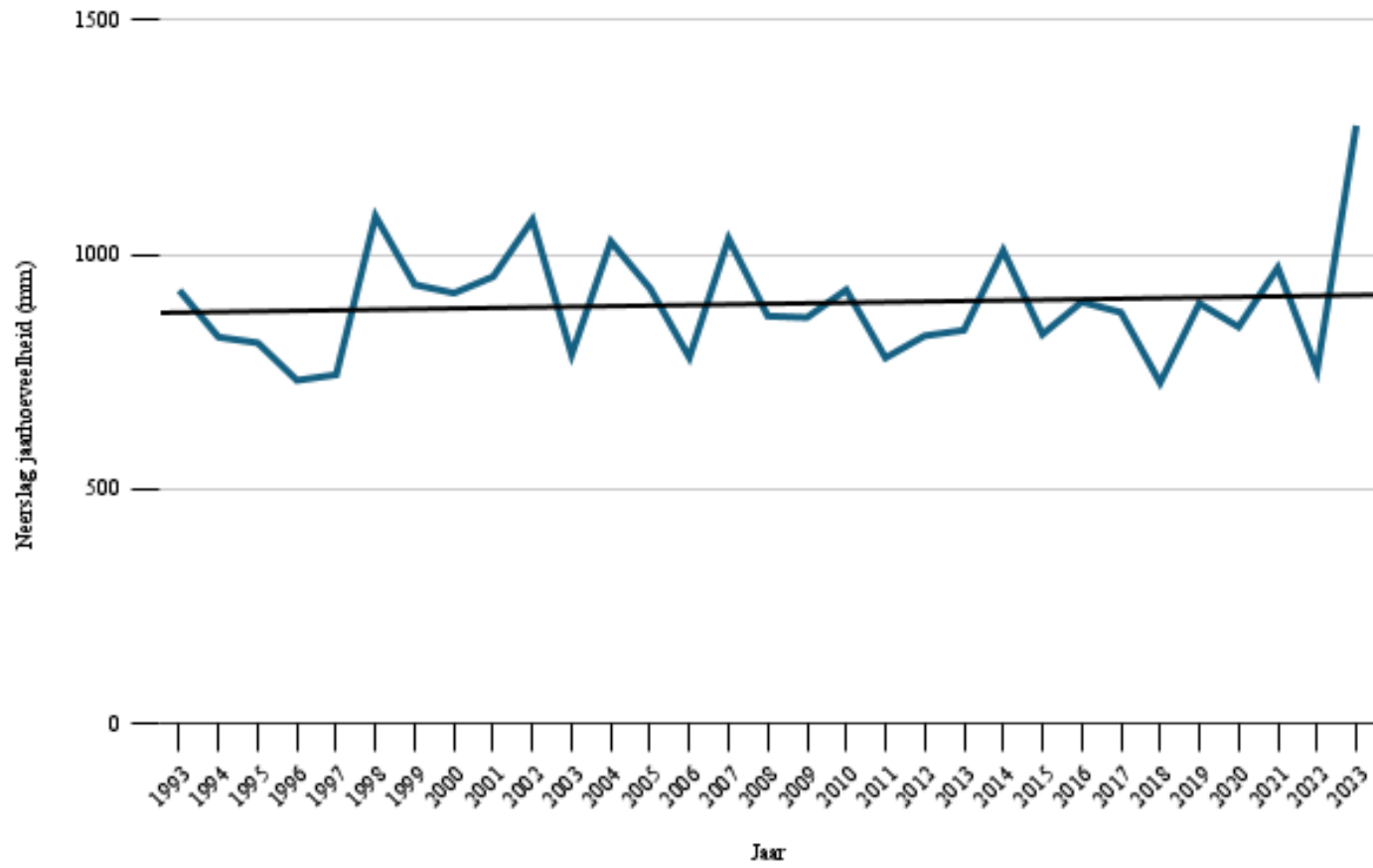
◆ Hoeveelheid per jaar
— Trendlijn metingen

■ 90% band
— Verwachting dit jaar

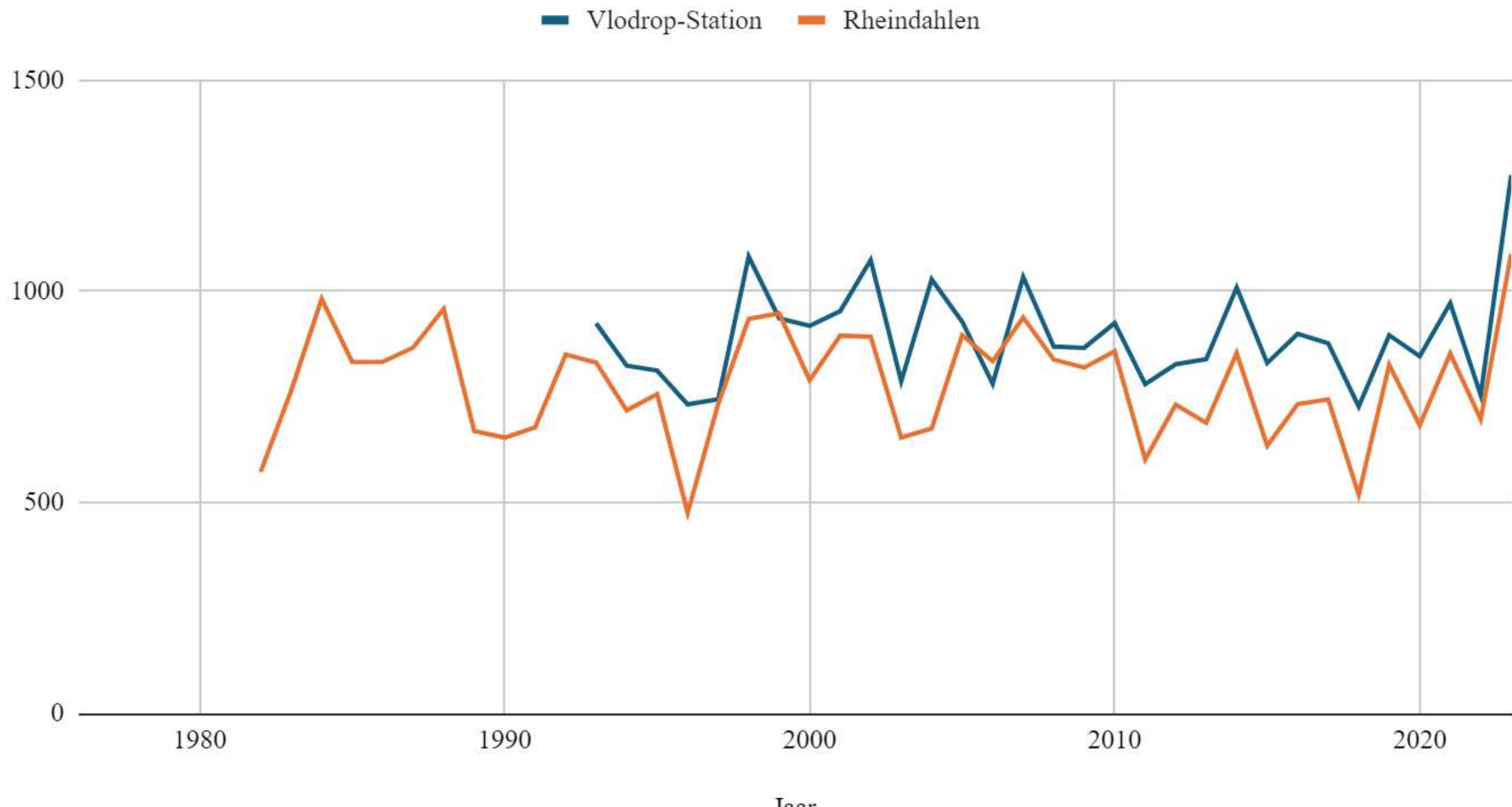
— Hd-klimaatscenario
— Ld-klimaatscenario

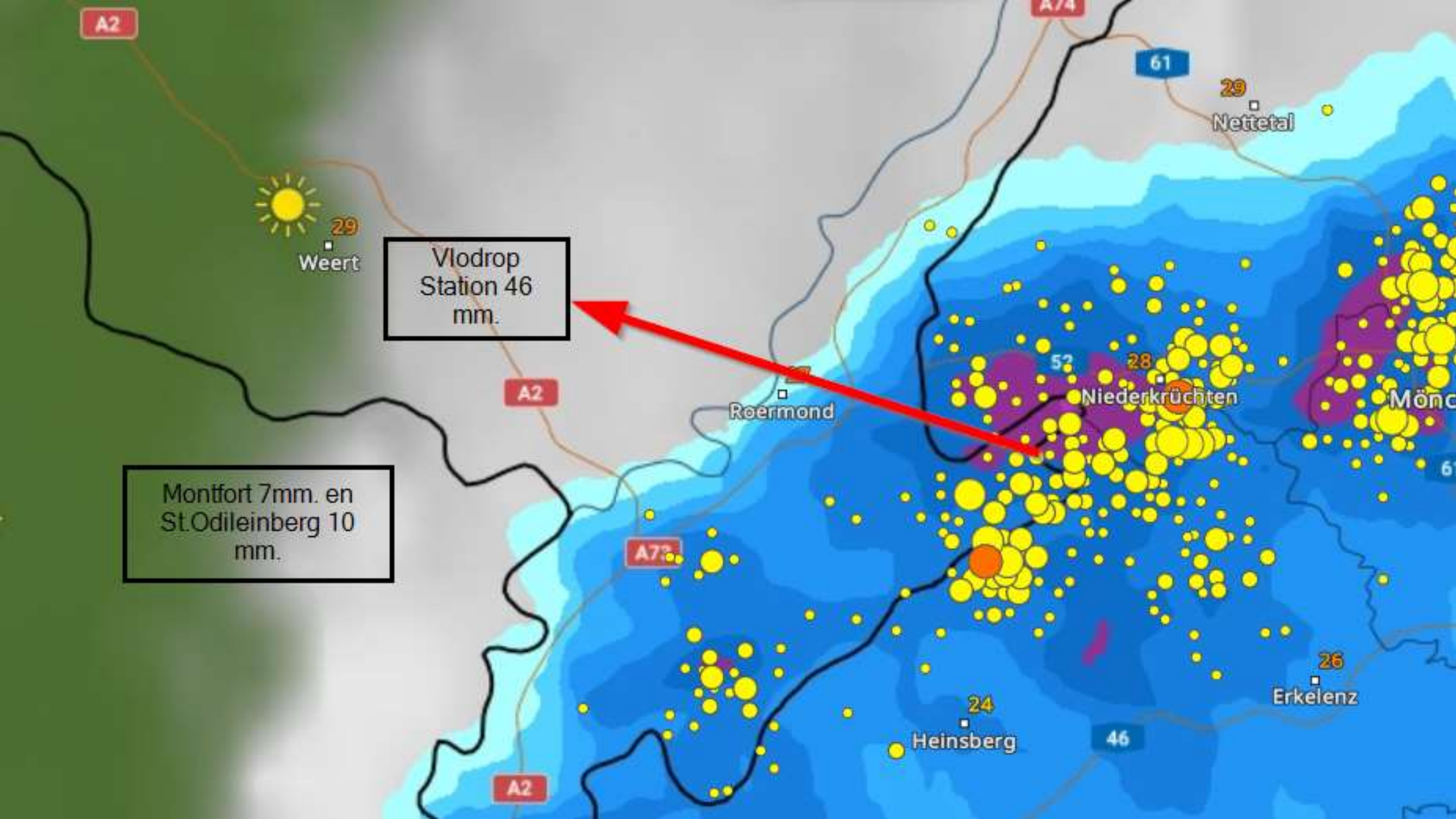
— Hn-klimaatscenario
— Ln-klimaatscenario

Neerslaggegevens Vlodrop Station



Vlodrop-Station en Rheindahlen





A2



29
Weert

Vlodrop
Station 46
mm.

A2

Roermond

A74

52

28

Niederkrüchten

Mönch

Montfort 7mm. en
St.Odileinberg 10
mm.

A2

24

Heinsberg

46

26

Erkelenz

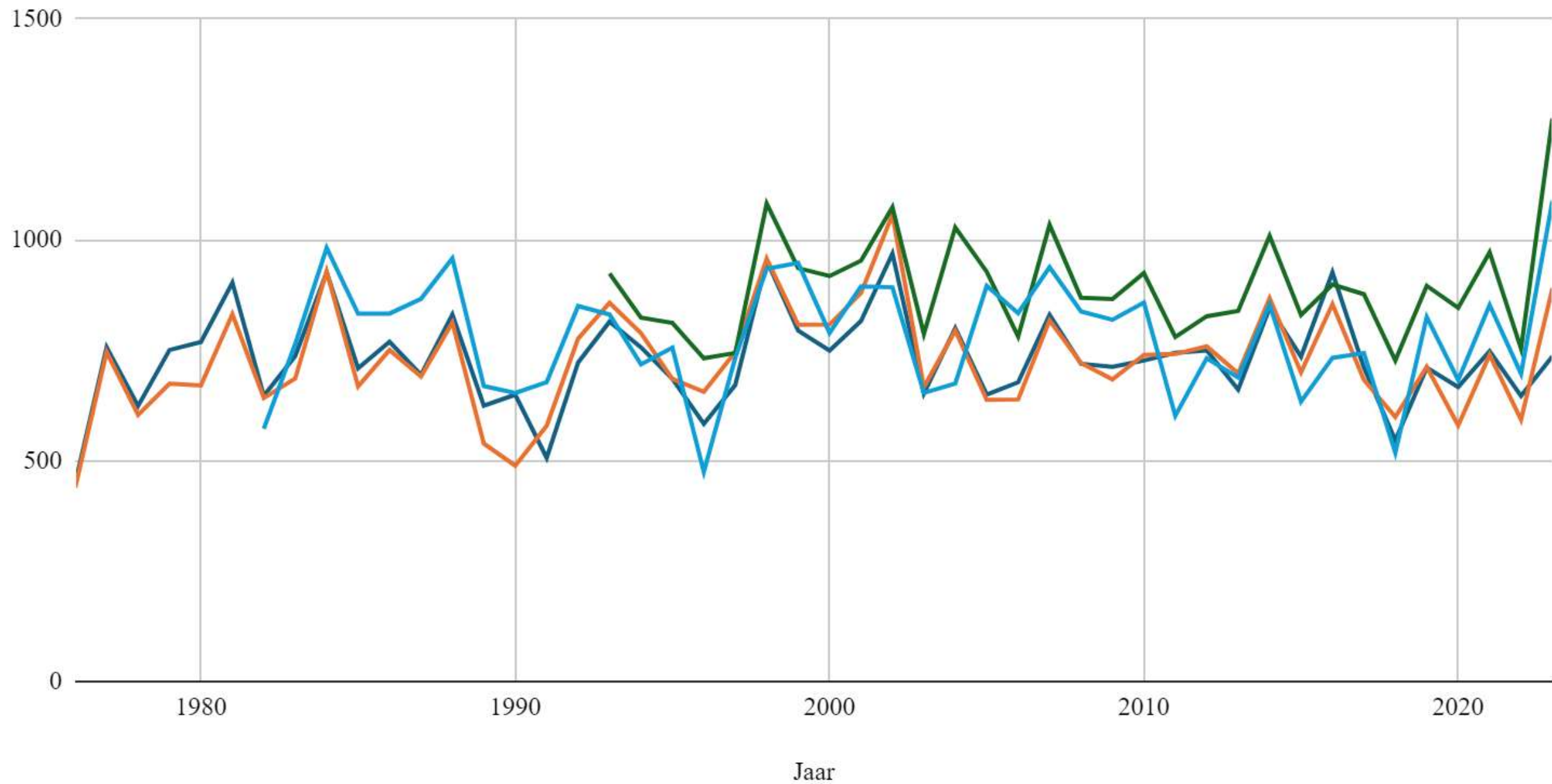
61

29

Nettetal

Roermond, Montfort, Vlodrop-Station en Rheindahlen

Roermond Montfort Vlodrop-Station Rheindahlen





Neerslagverdeling in de seizoenen

- Lente : 20%
- Zomer: 29%
- Herfst: 25%
- Winter: 26%

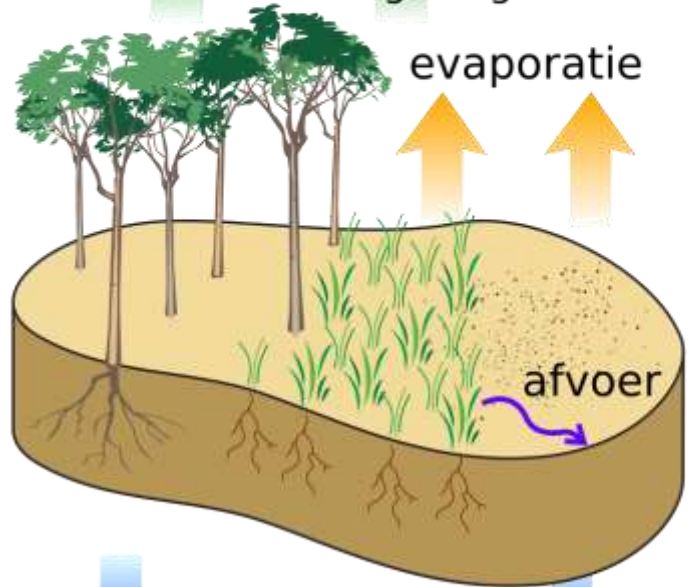
evapotranspiratie
transpiratie + evaporatie

transpiratie


bomen

lage vegetatie

evaporatie



grondwater
aanvulling



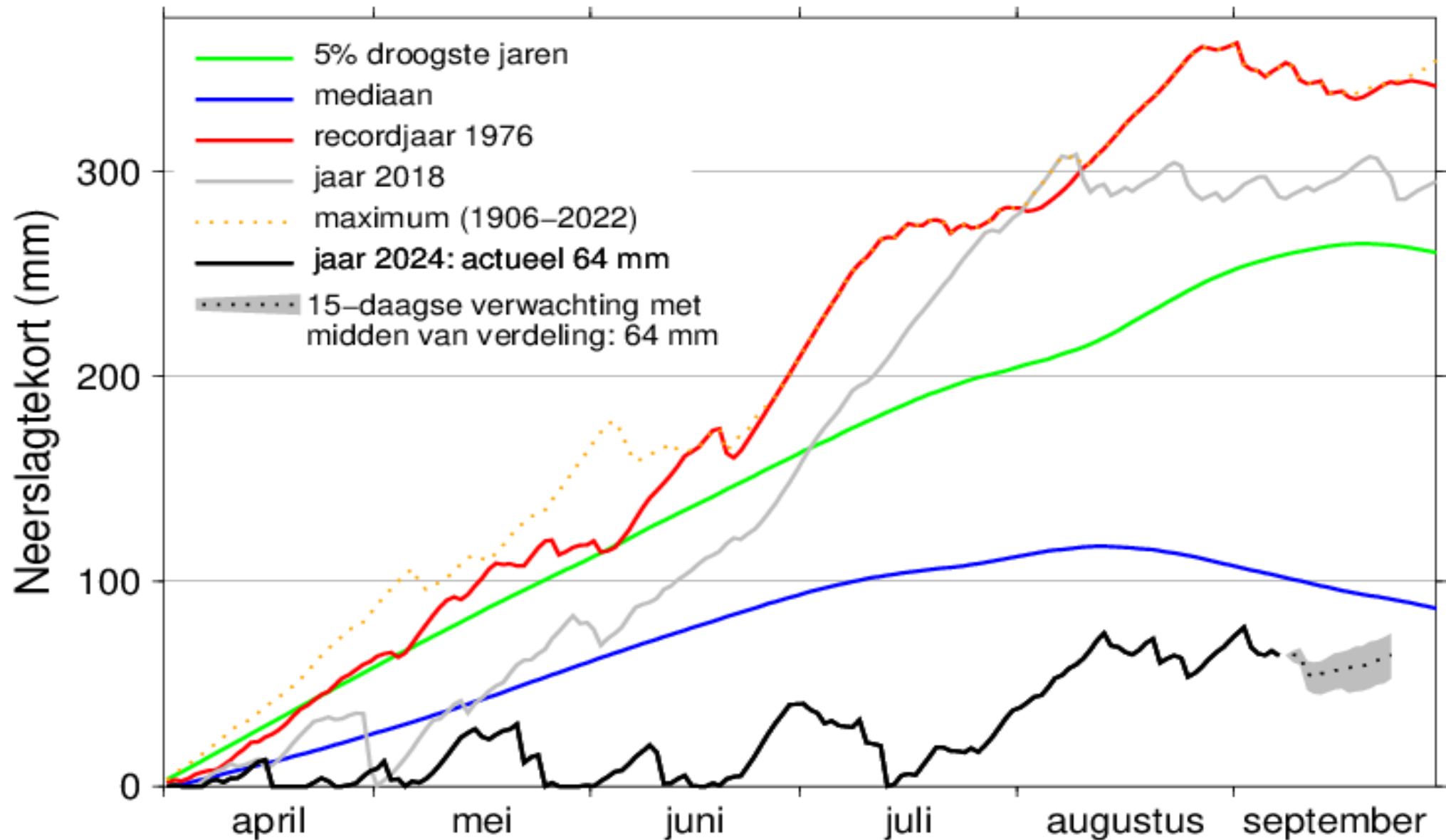
Elke dag verdampt er ongeveer 5 millimeter water.

Januari verdamping ongeveer 9 mm.

Juli verdamping ongeveer 100 mm.

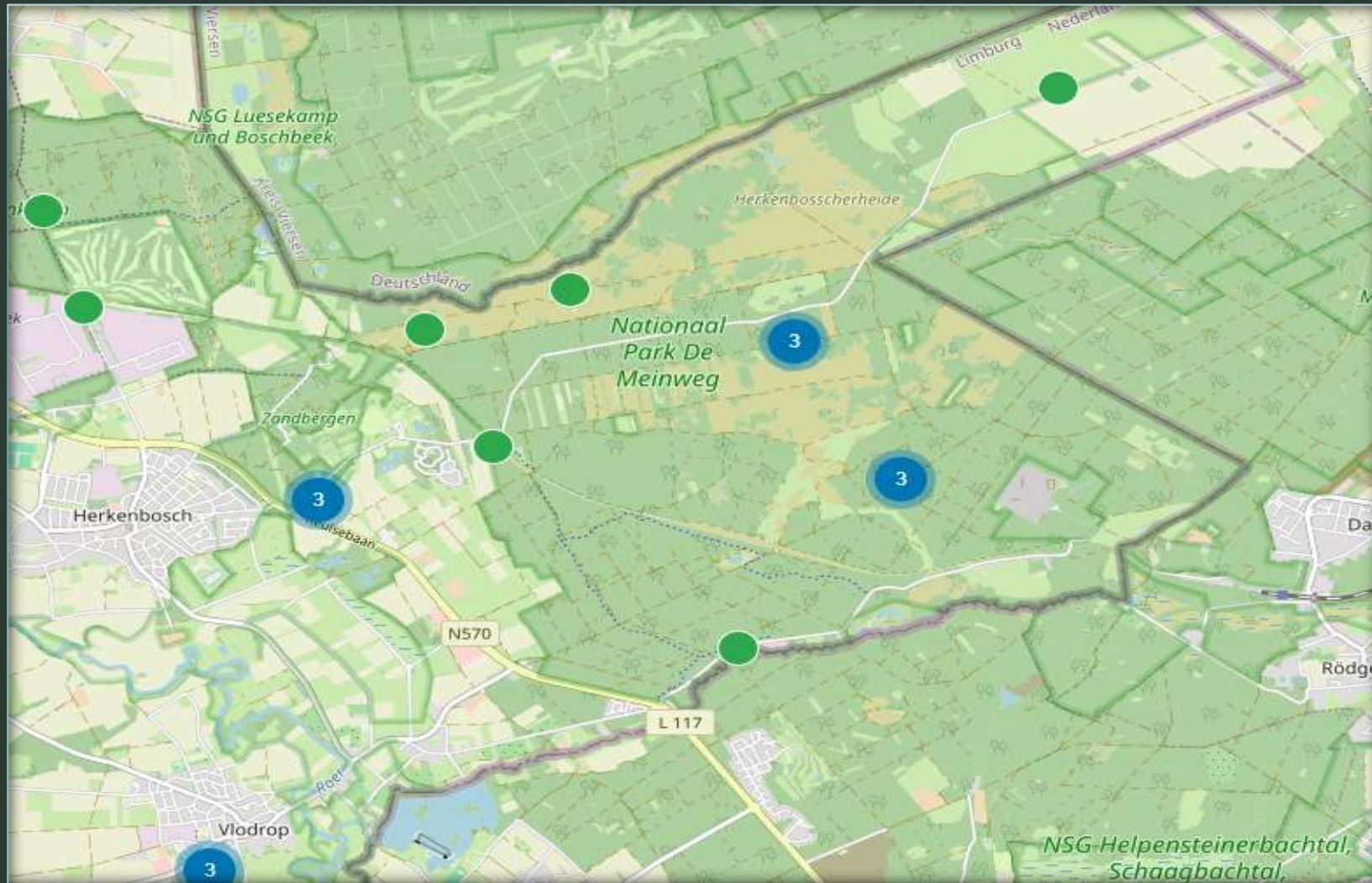
Neerslagtekort in Nederland in 2024

Landelijk gemiddelde over 13 stations





Primair Grondwater Meetnet

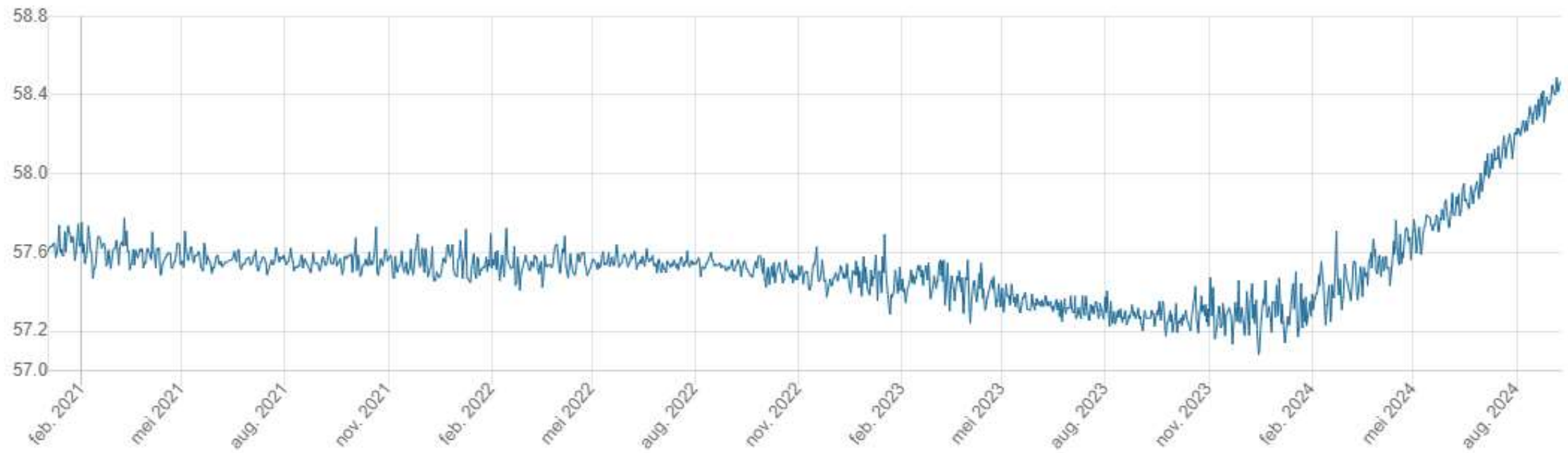


B58G0140-001 De Meinweg 205, Roerdalen

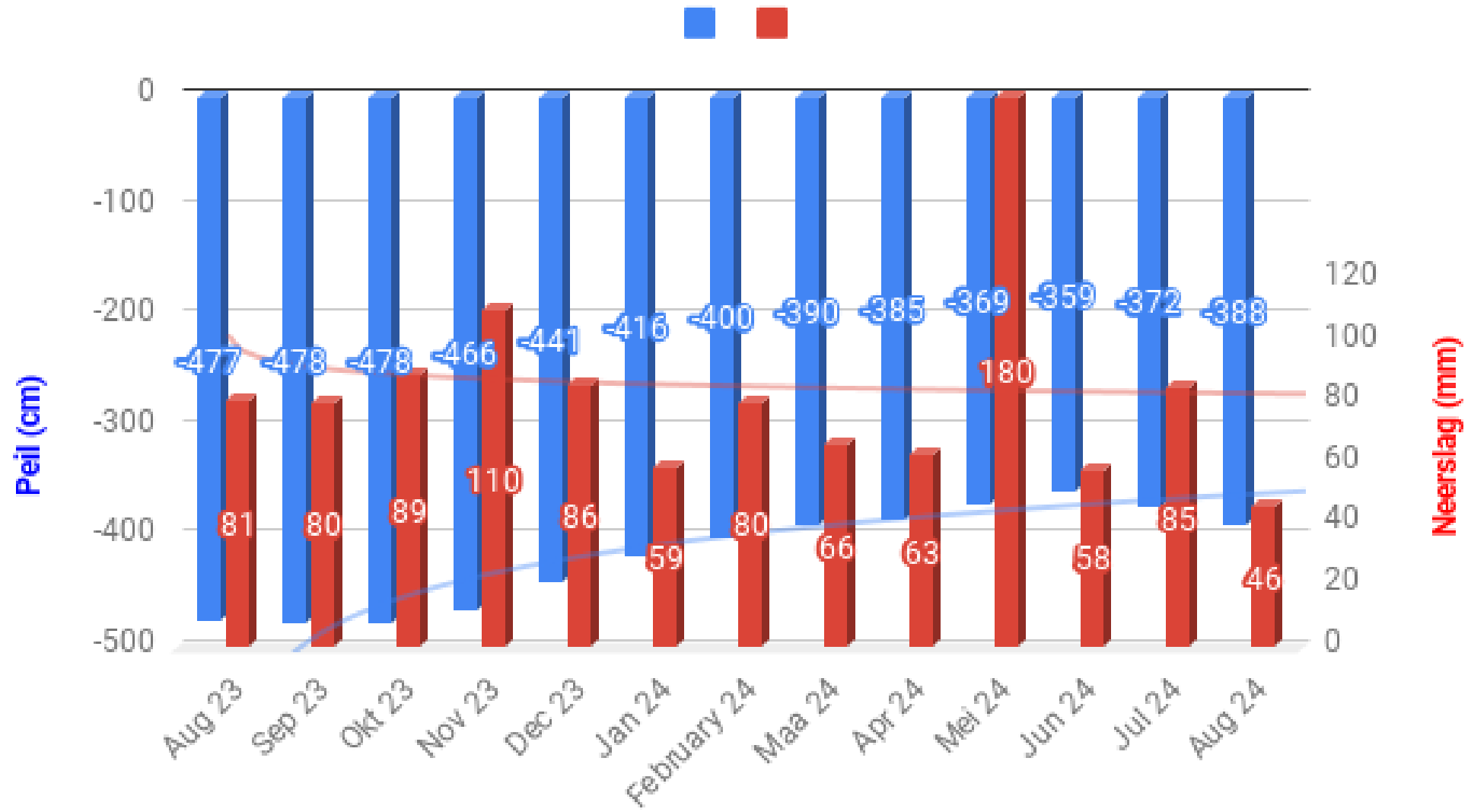
m NAP

● B58G0140-001

m NAP



Grondwaterpeil St. Odiliëberg (Hobertsveld) 2023 - 2024





- Conclusies
Schlußfolgerungen





- Vragen?
- Fragen?

